

# Organization Charts

## College of Engineering Organizational Charts

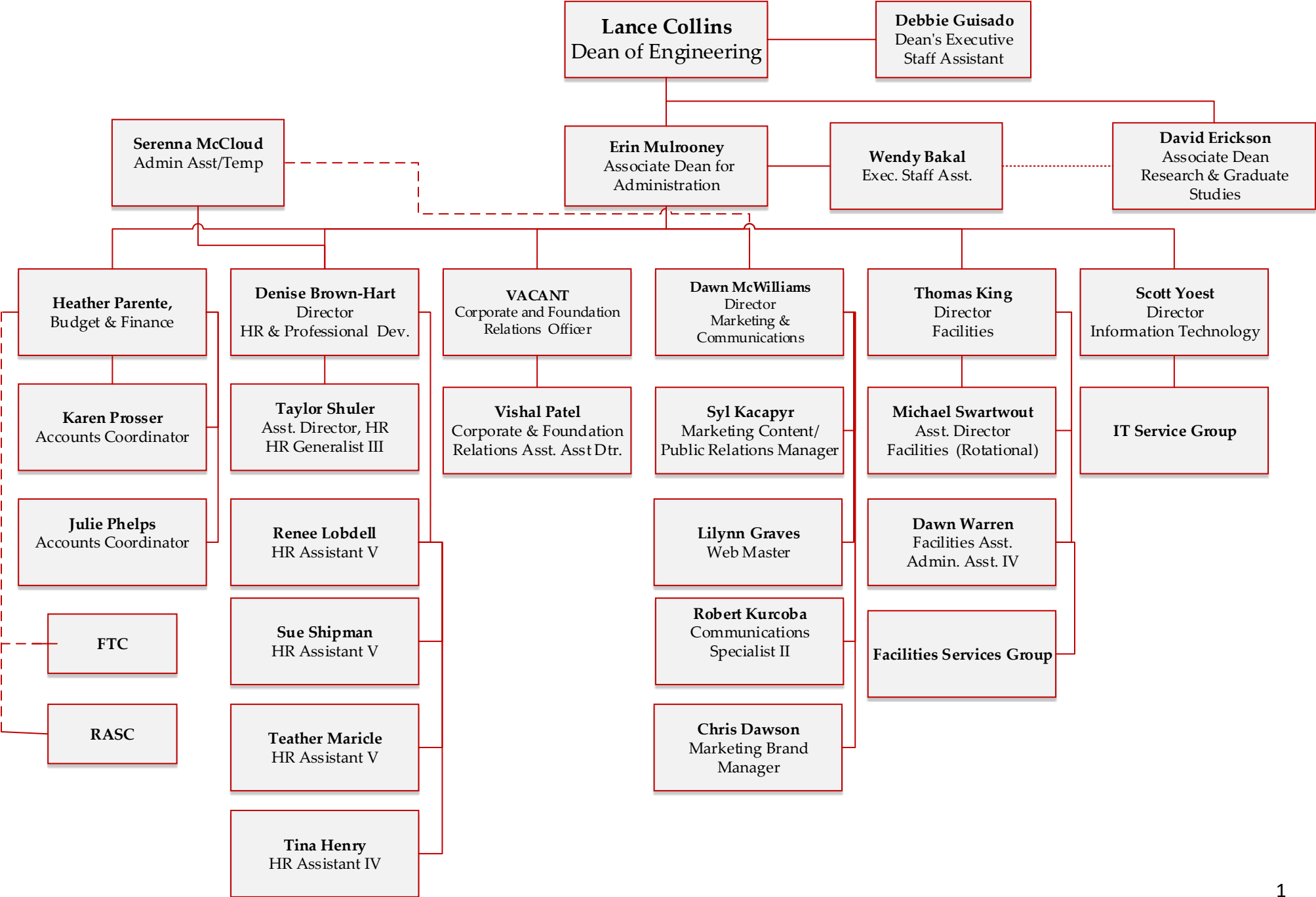
### Administrative

Administration	1
Engineering Deans	2
Administrative Directors	3
Department & School Directors and Chairs	4
Department Directors of Administration	5
Student Services	6
Undergraduate Programs	7
Diversity Programs	8
Research Administration Svcs. Center	9
Alumni Affairs & Development	10
Financial Transaction Center	11
Information Technology Service Center	12

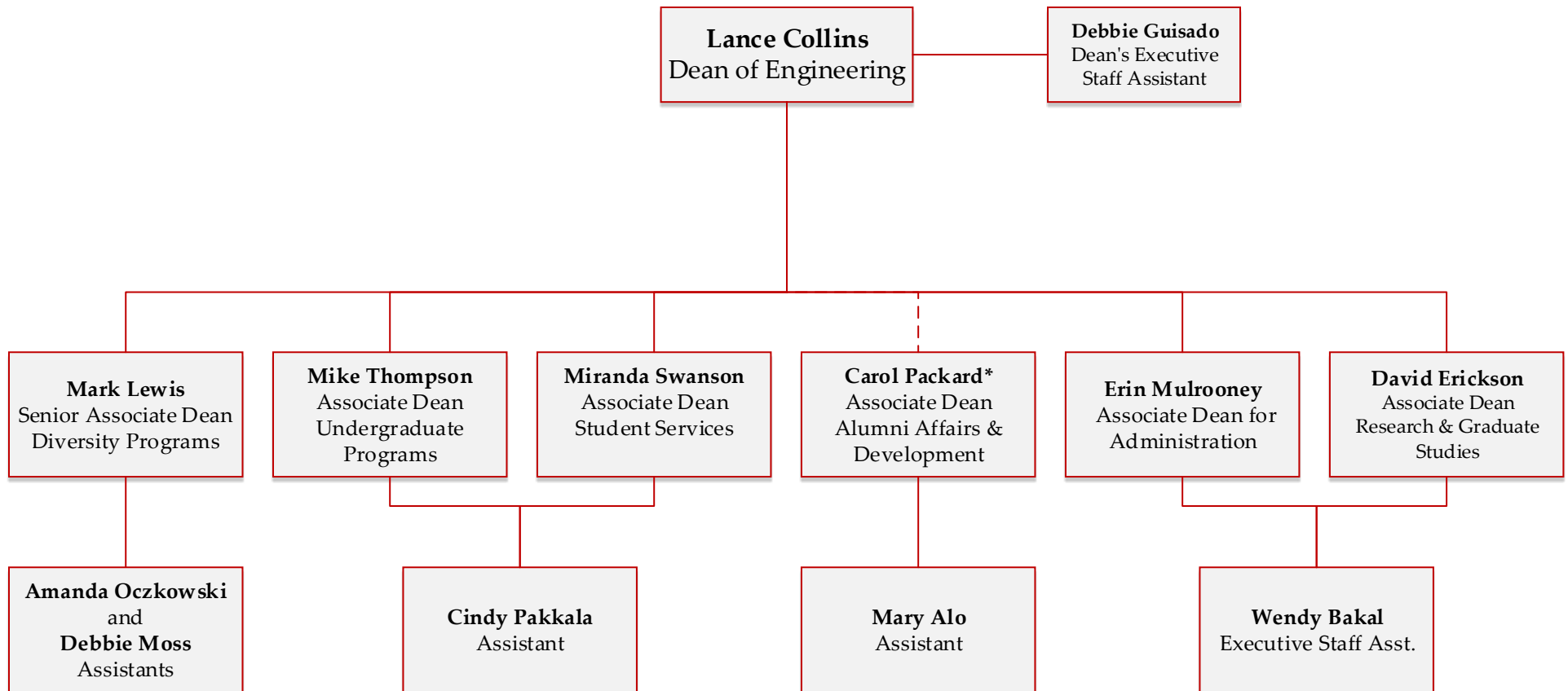
### Schools and Departments

Facilities Service Center	13
Applied Engineering and Physics	14
Biomedical Engineering	15
Chemical & Biomolecular Engineering	16
Civil & Environmental Engineering	17
Earth & Atmospheric Sciences	18
Electrical & Computer Engineering	19
Mechanical & Aerospace Engineering	20
Materials Sciences & Engineering	21
Operations Research & Information Engineering	22
Systems Engineering	23

# Administration



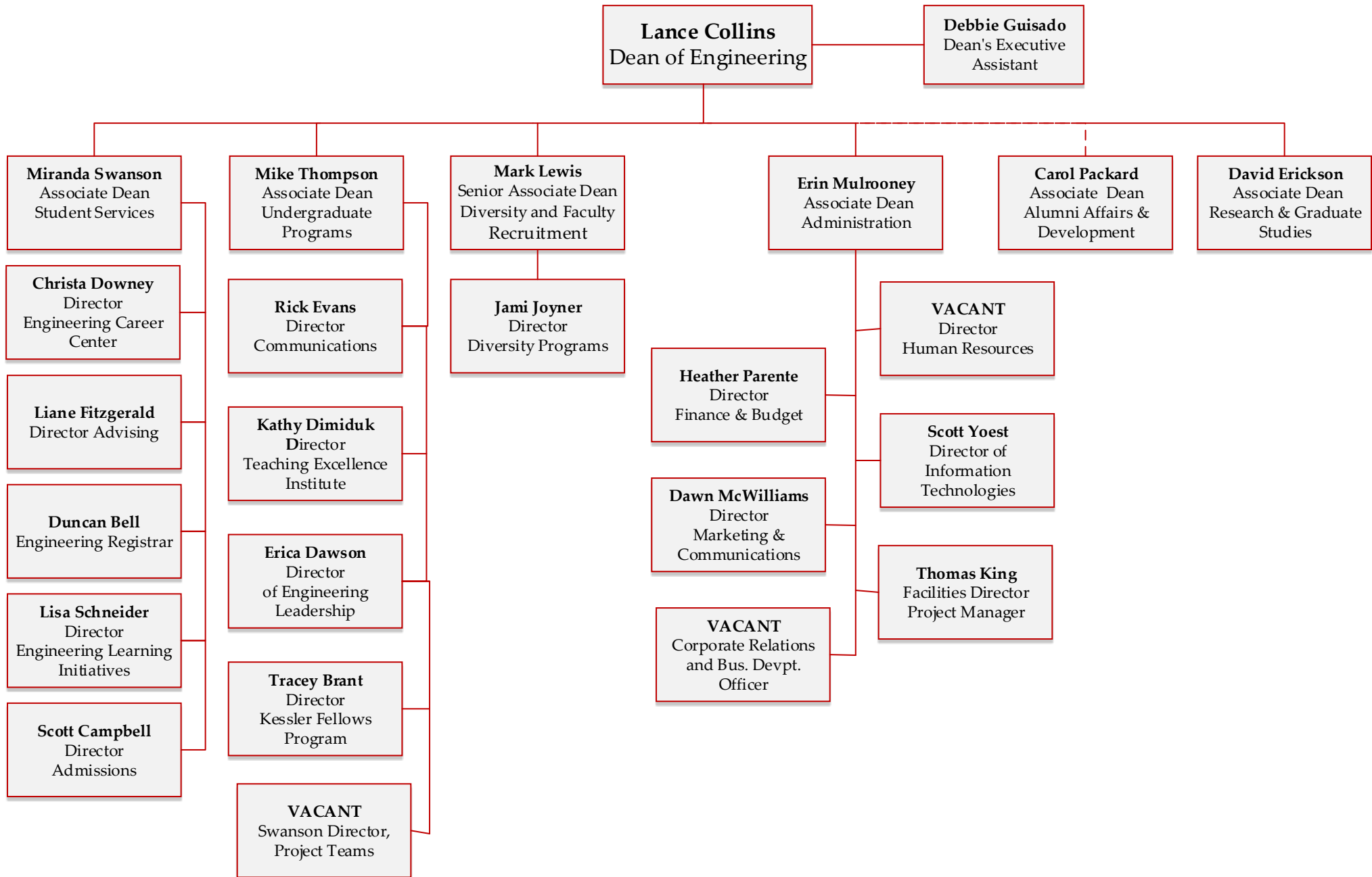
# Cornell Engineering

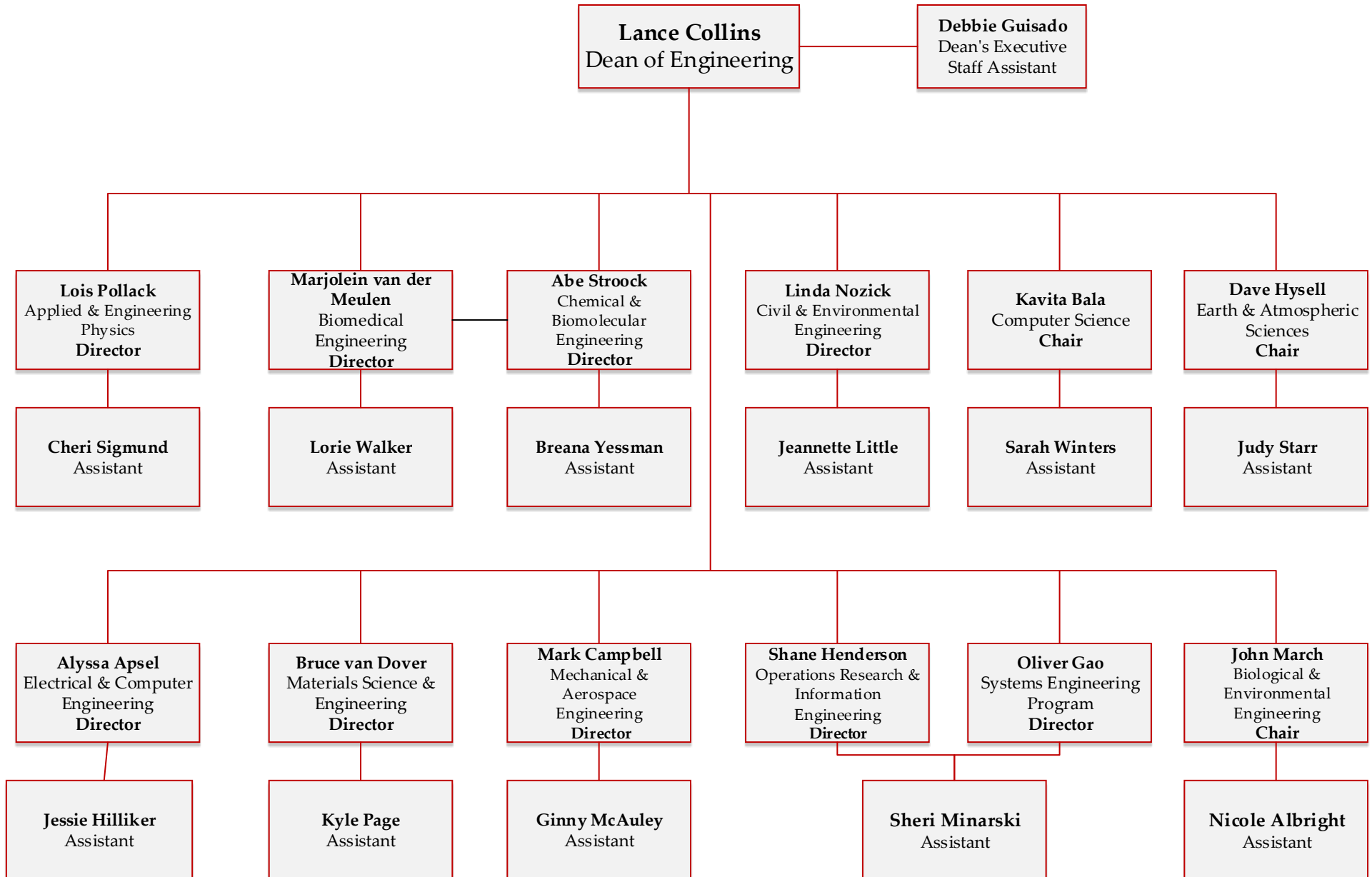


## Undergraduate Programs, Student Services and Administration

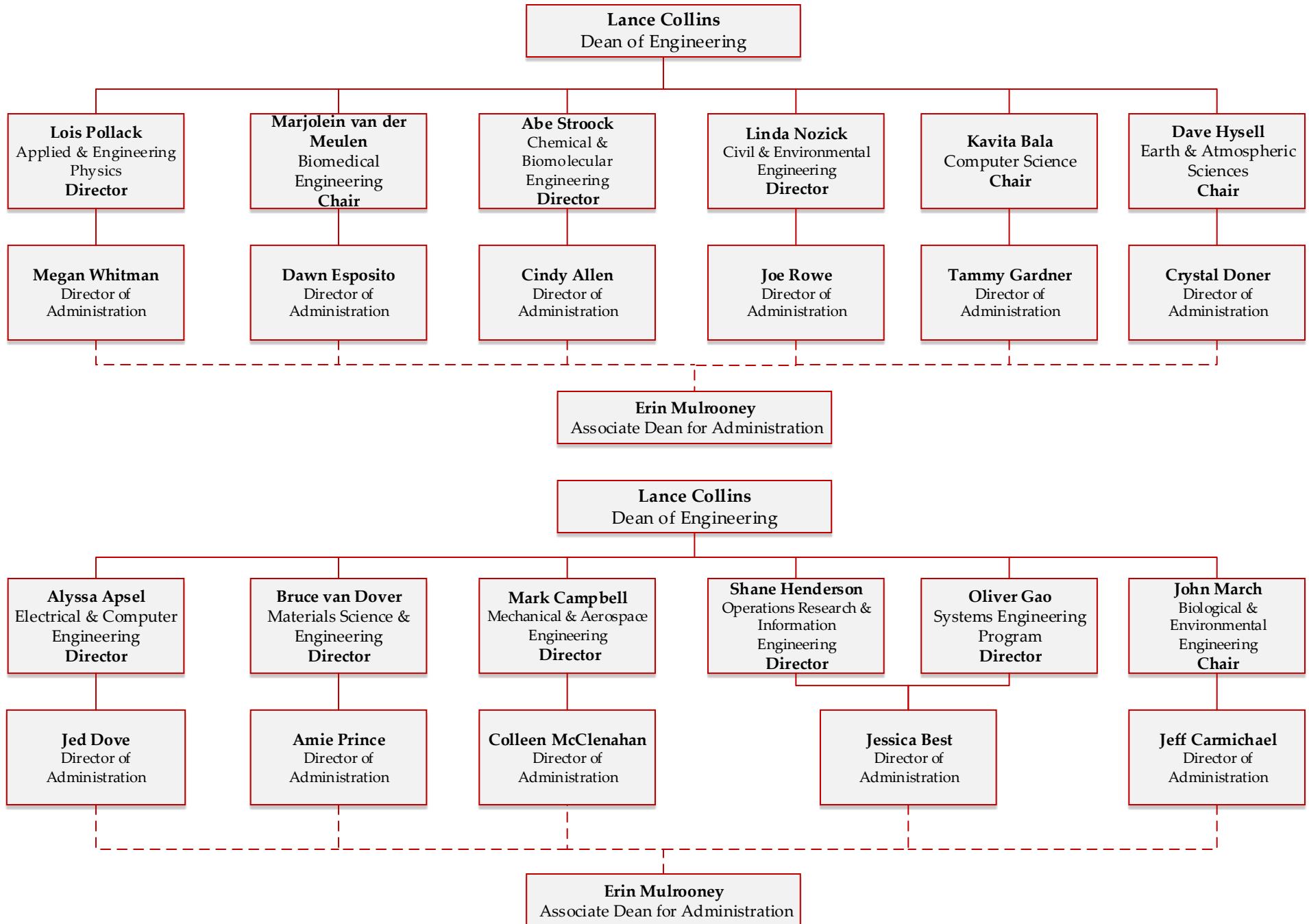
- Admissions
- Advising
- Communications & Marketing
- Engineering Career Center
- Corporate & Foundation Relations
- Information Technology
- Diversity Programs
- Engineering Learning Initiatives
- Facilities
- Finance & Budget
- Human Resources
- Registrar
- Research & Graduate Studies

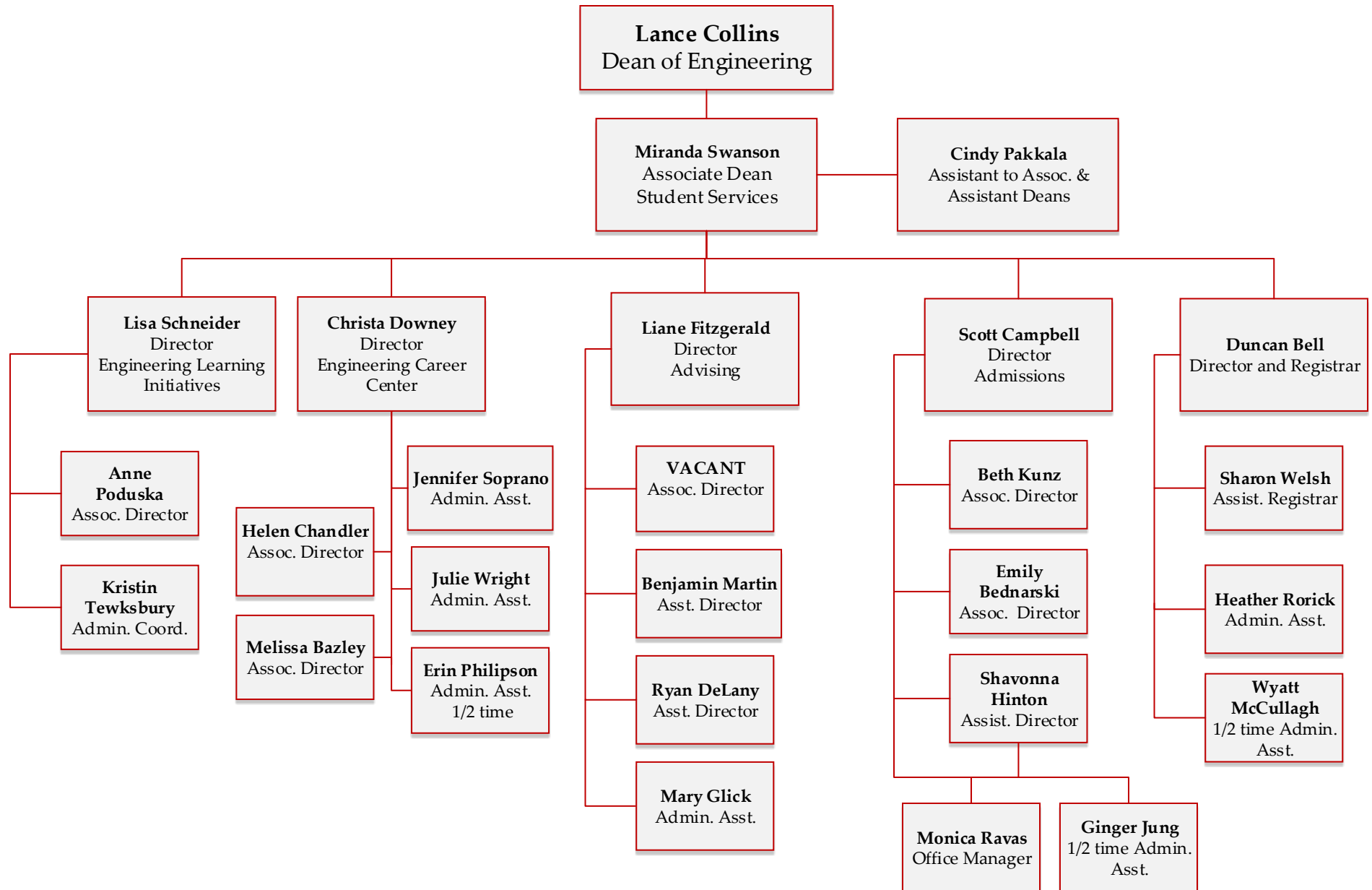
\*Reports directly to Kristen Ford-Assoc VP  
Colleges and Units.



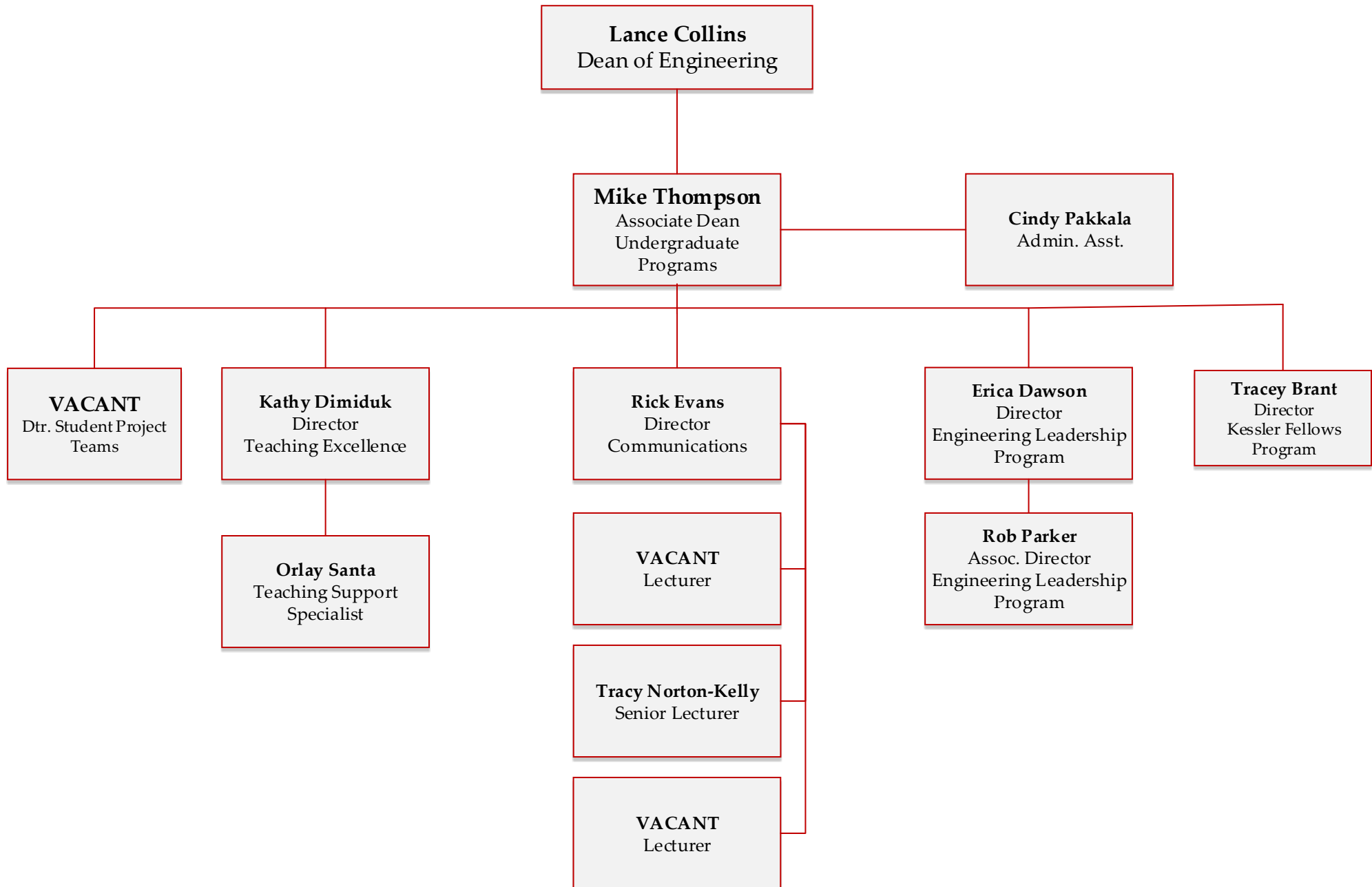


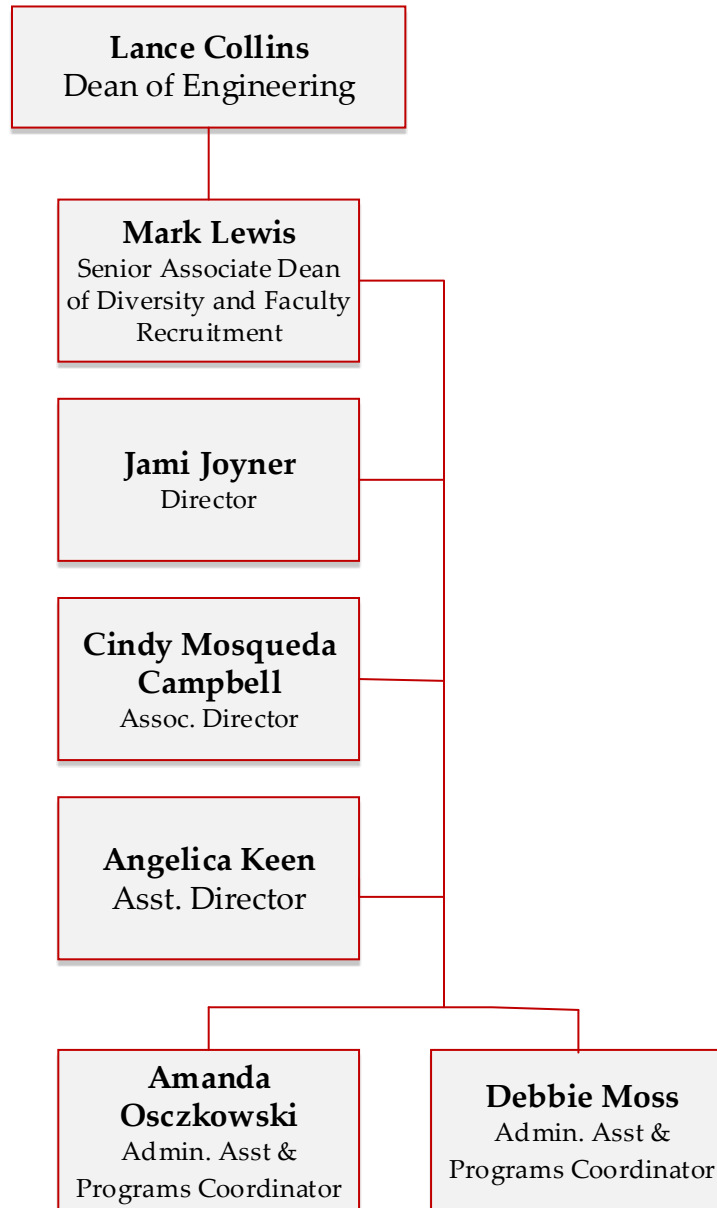
# Department Administrative Directors

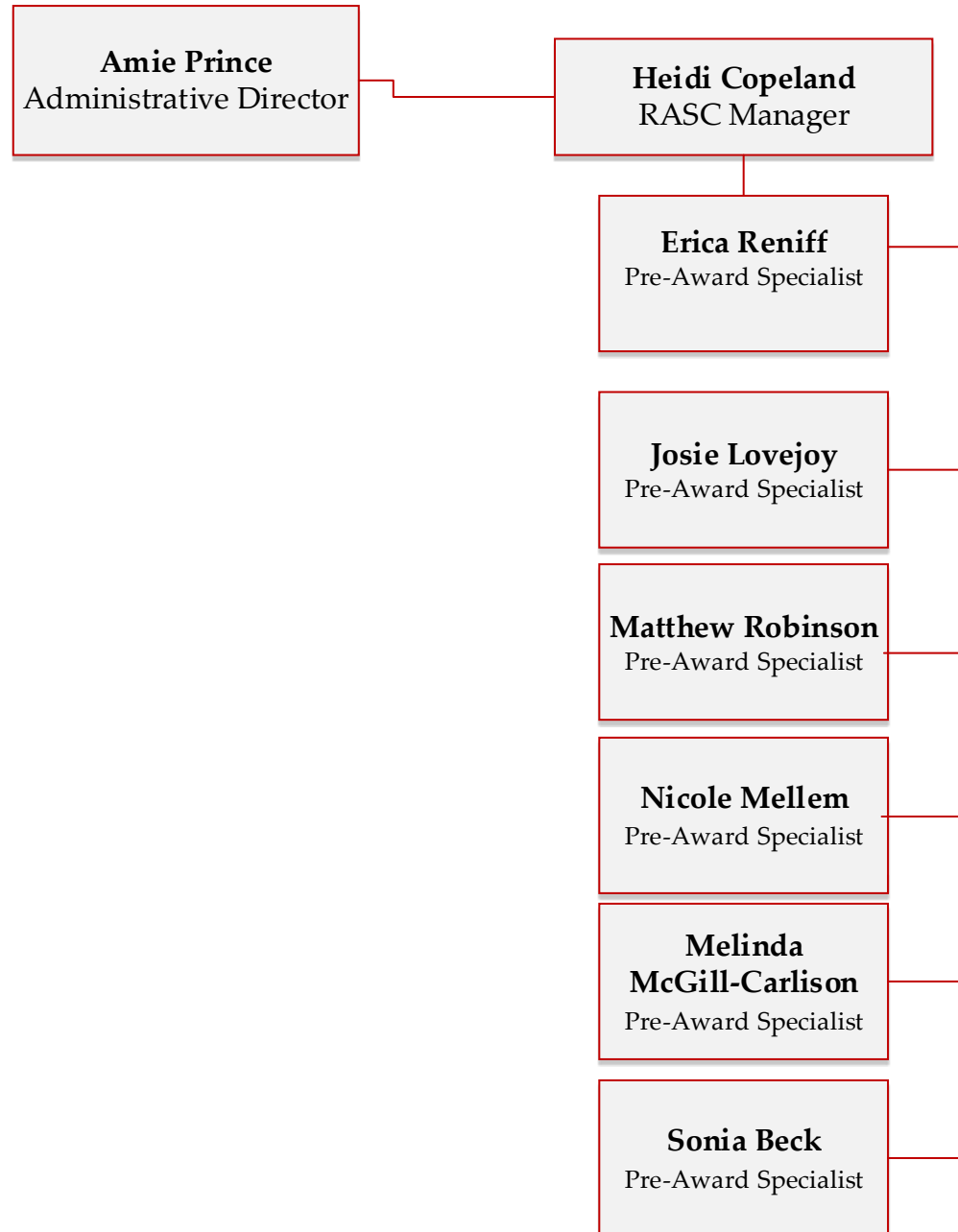


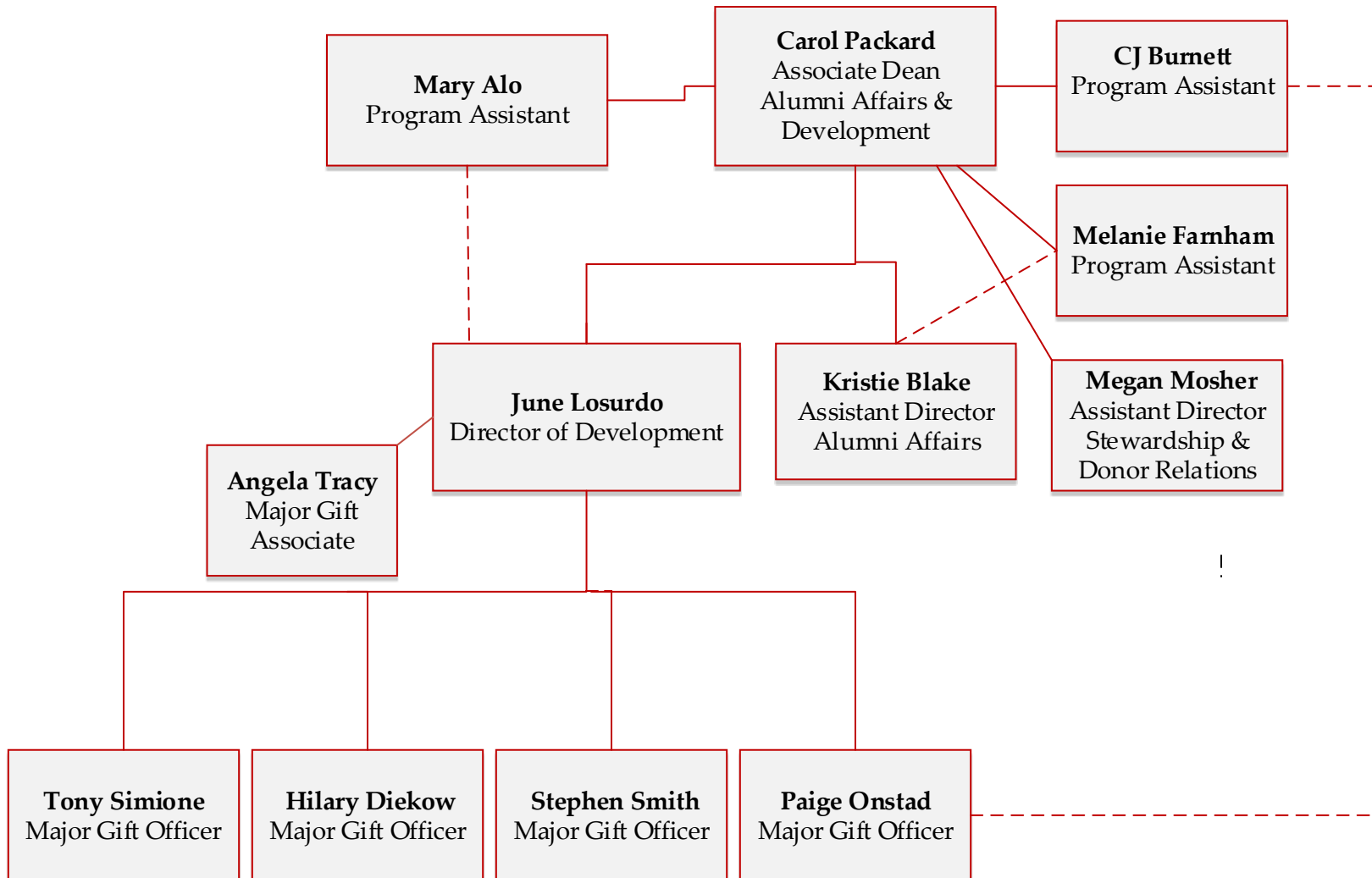




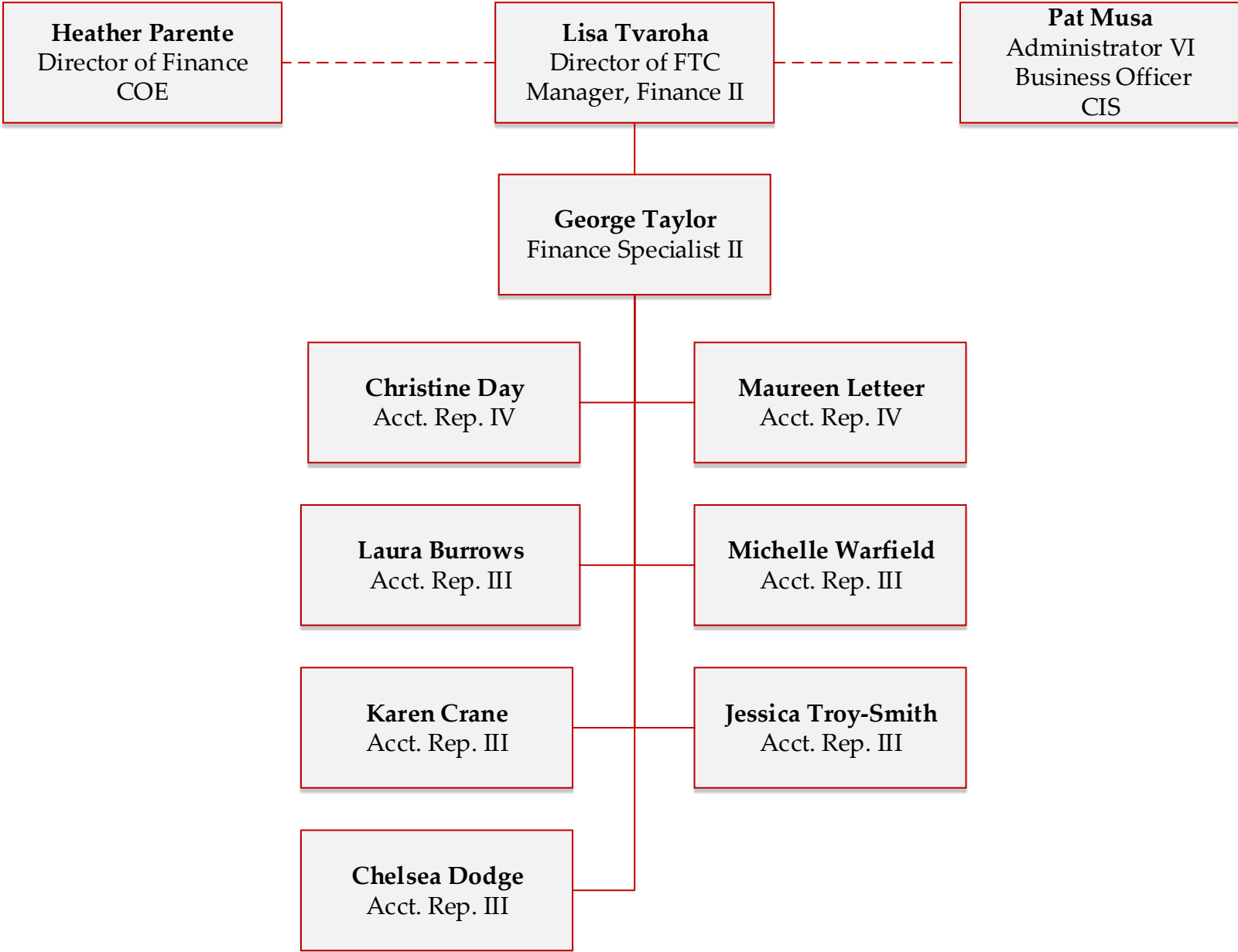




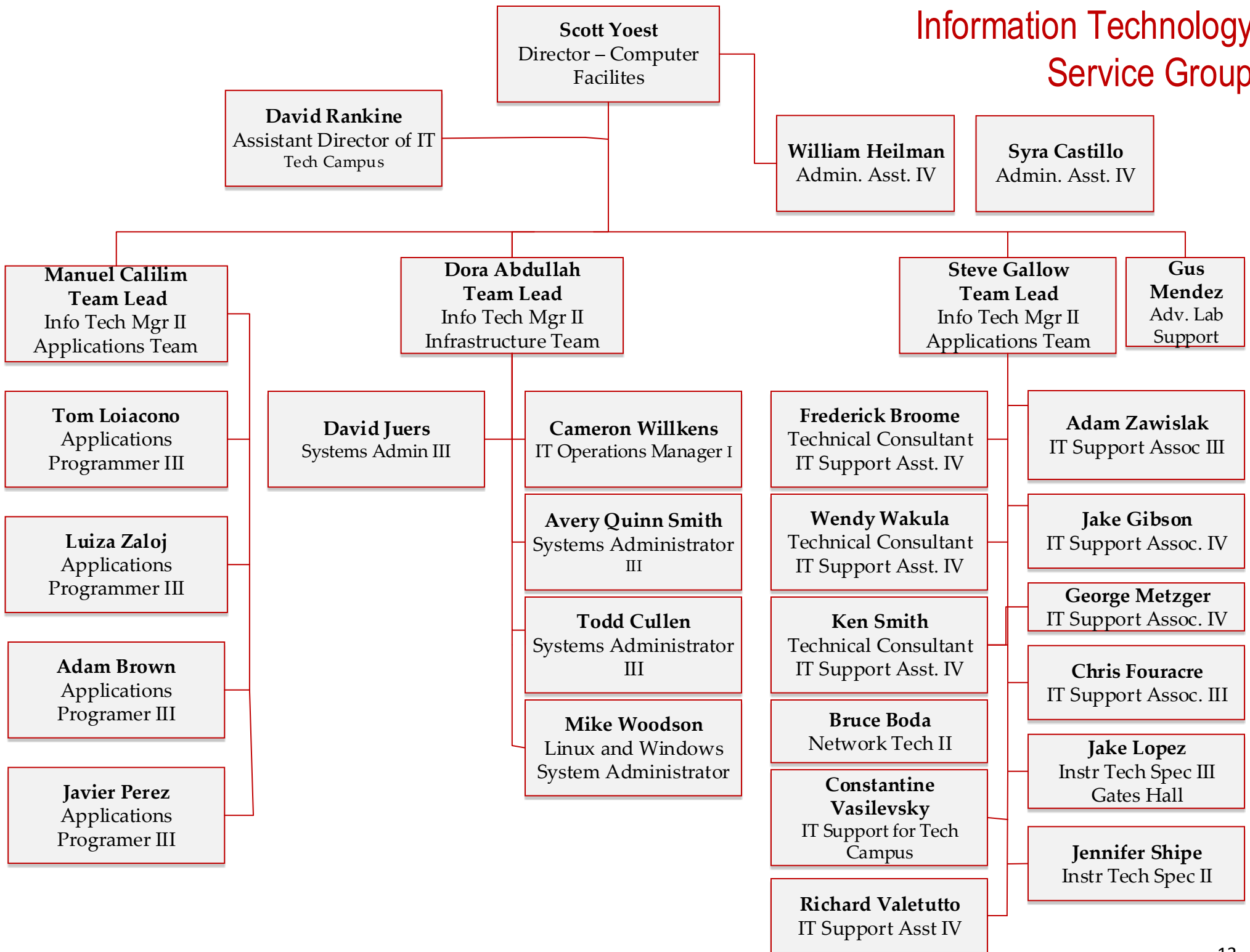




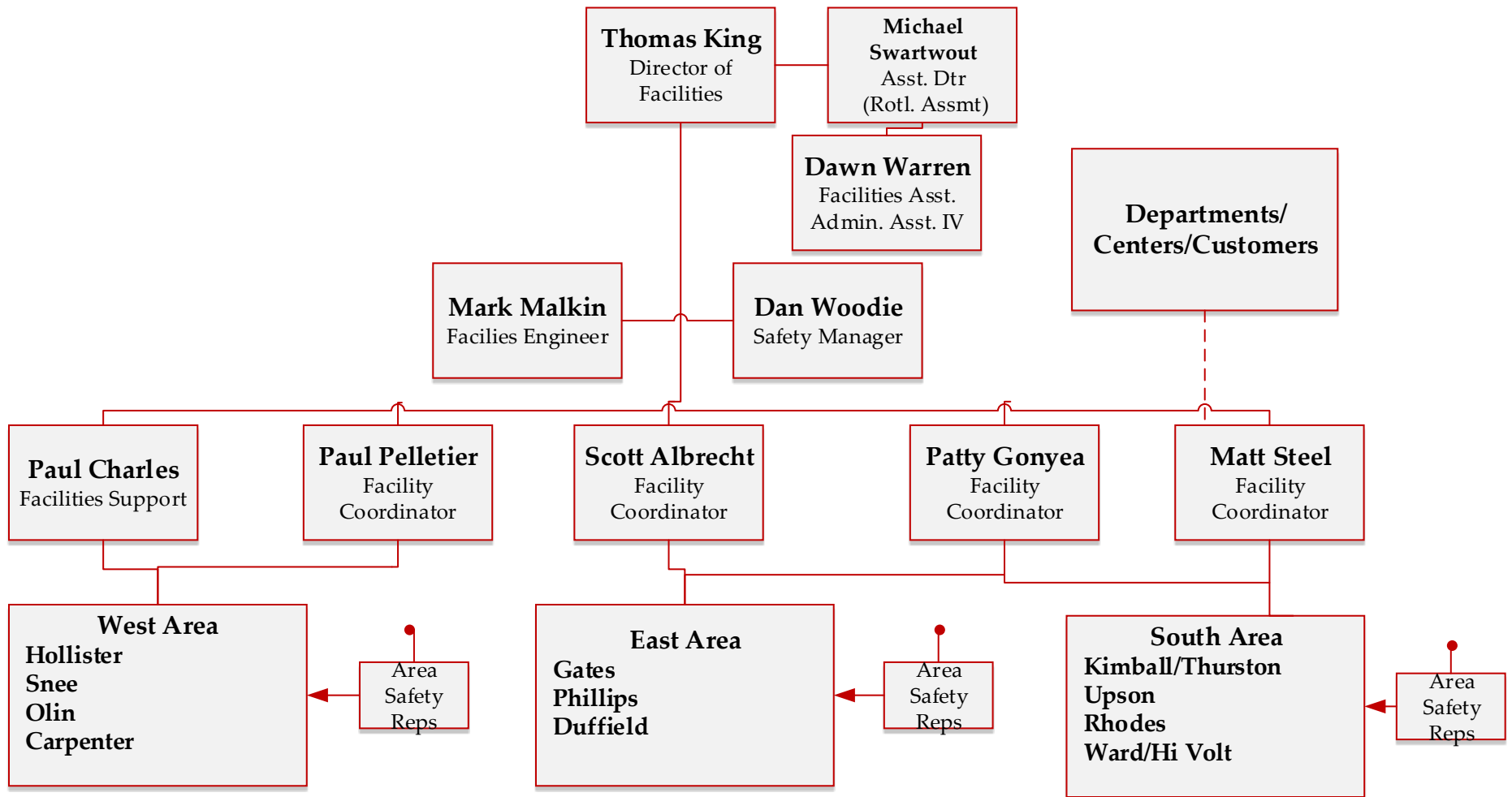
# Financial Transaction Center



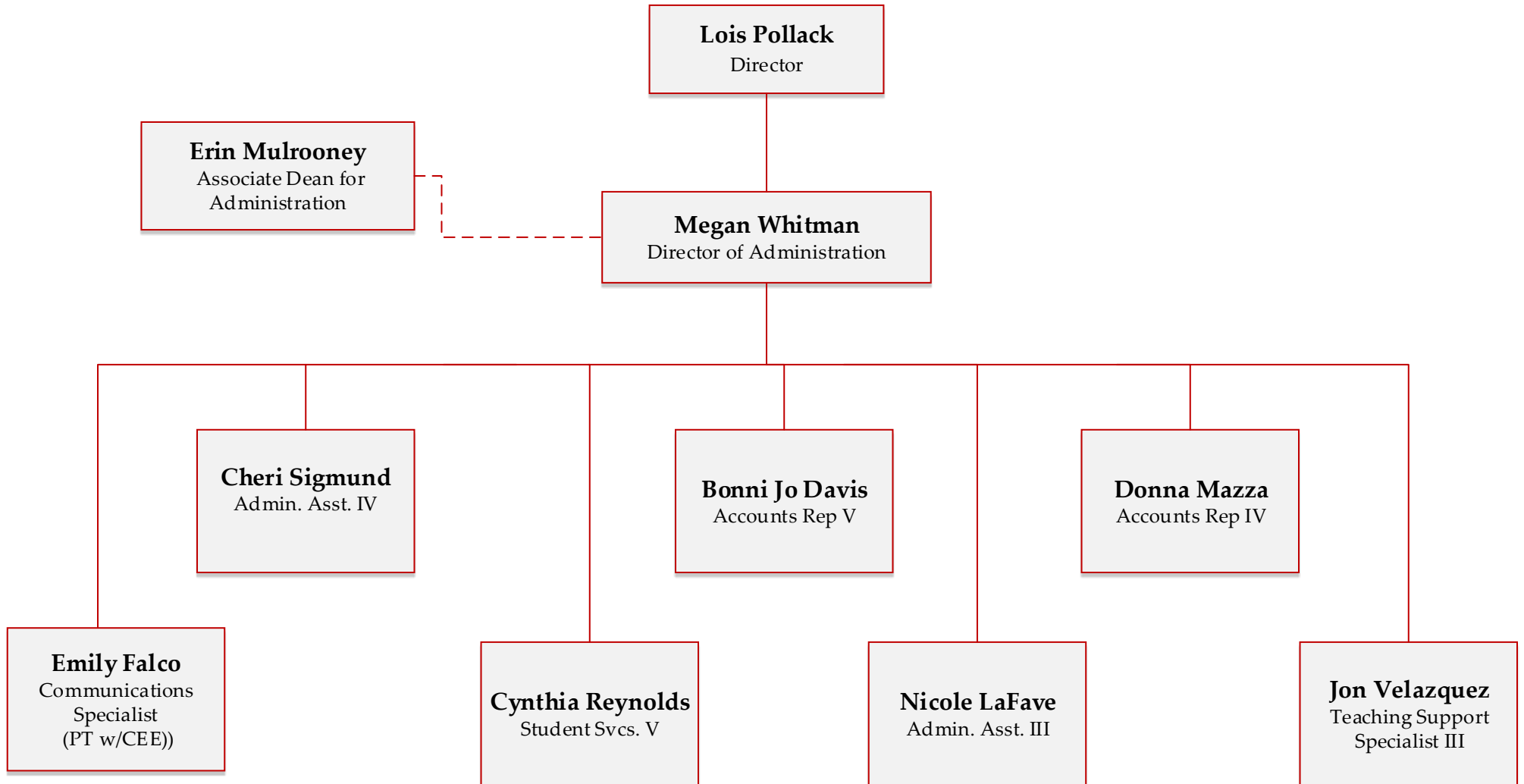
# Information Technology Service Group



# Facilities

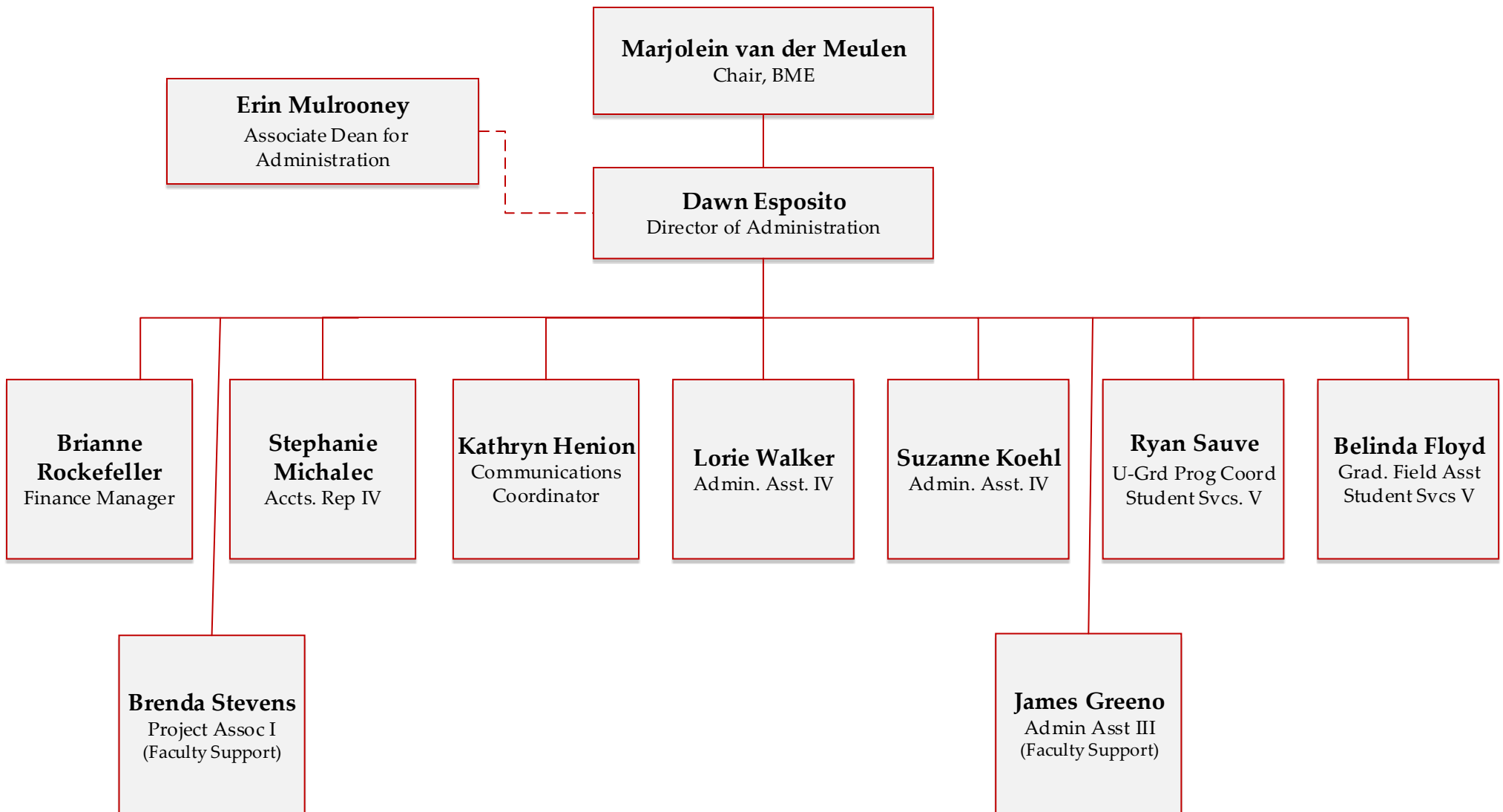


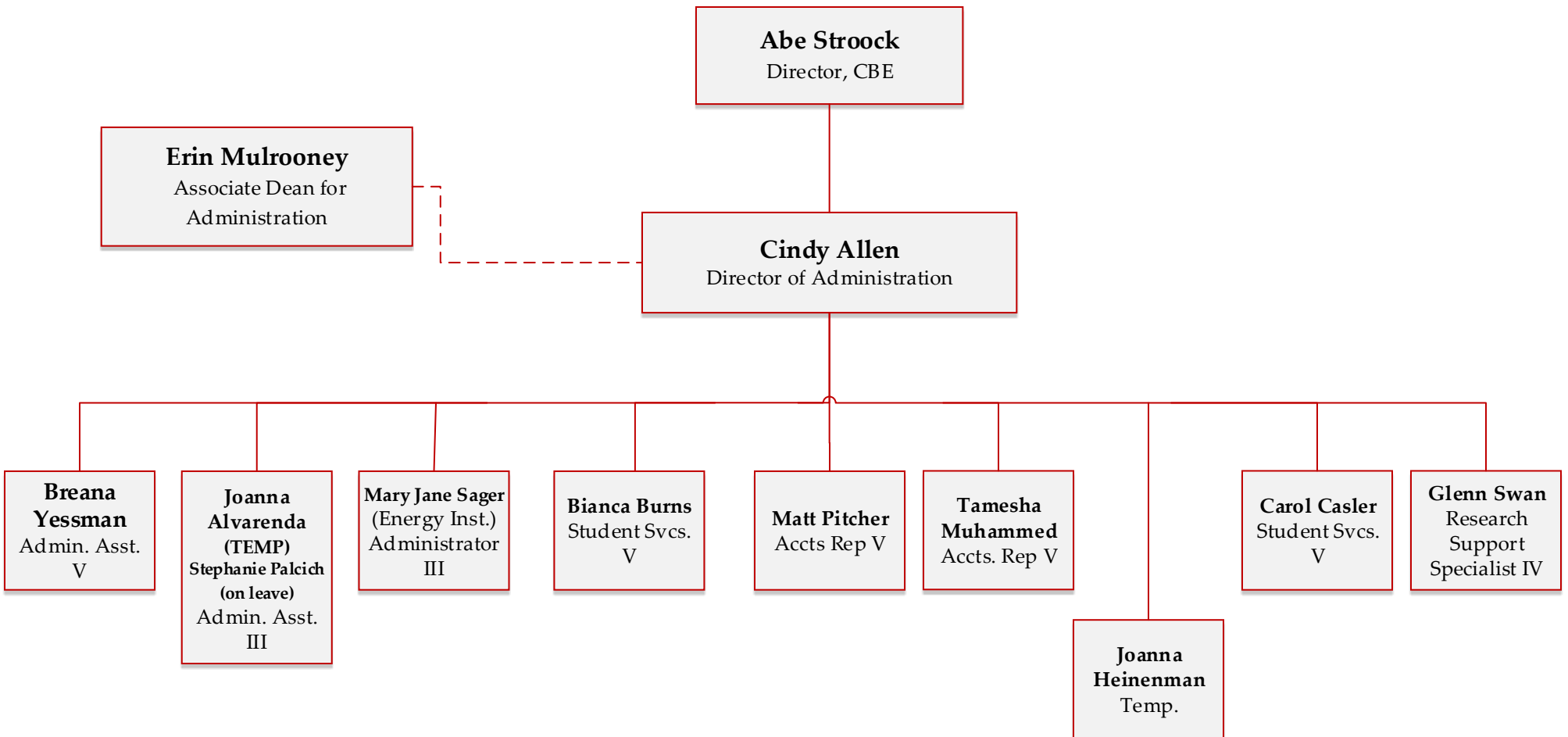
# School of Applied & Engineering Physics



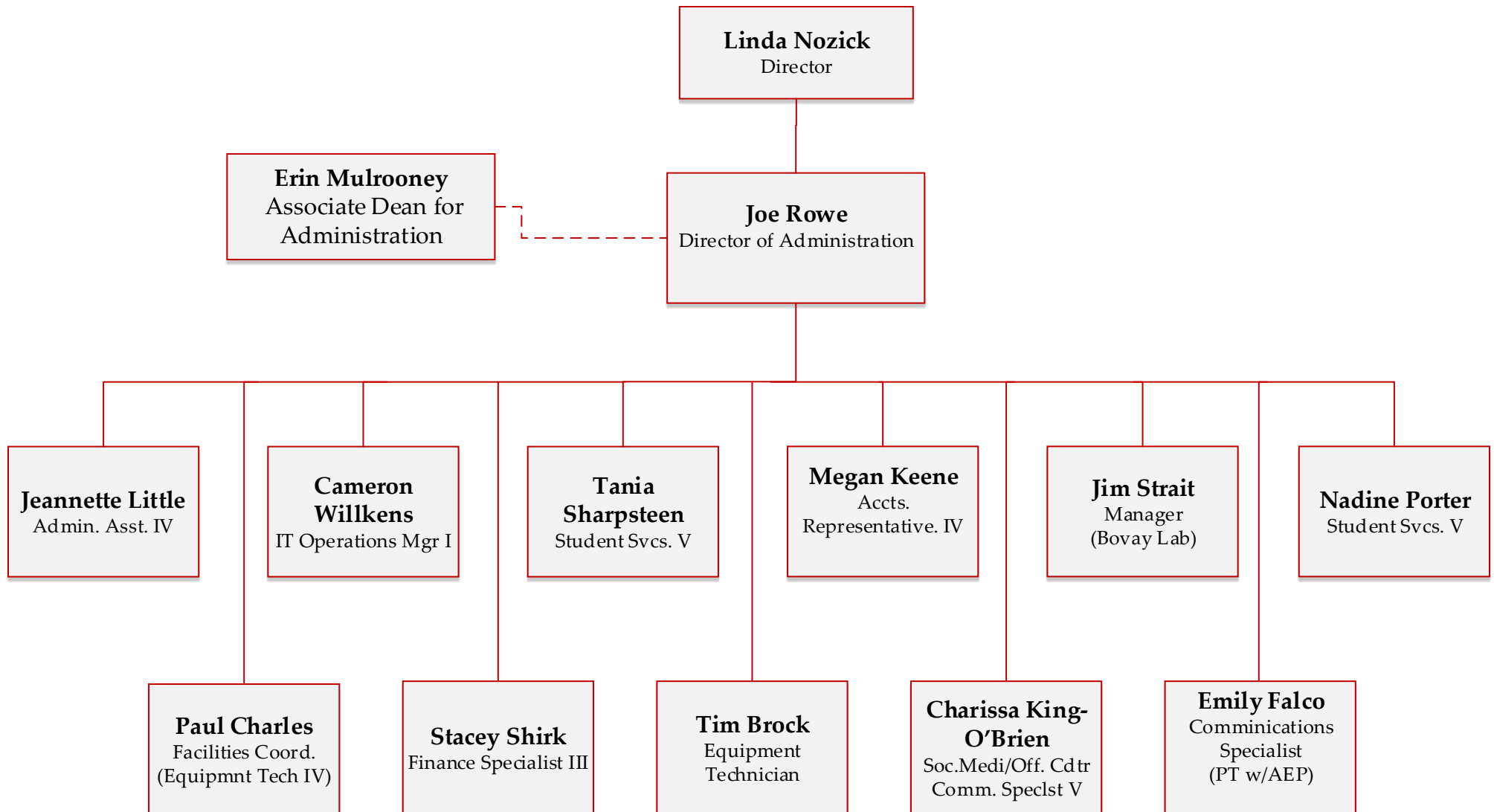


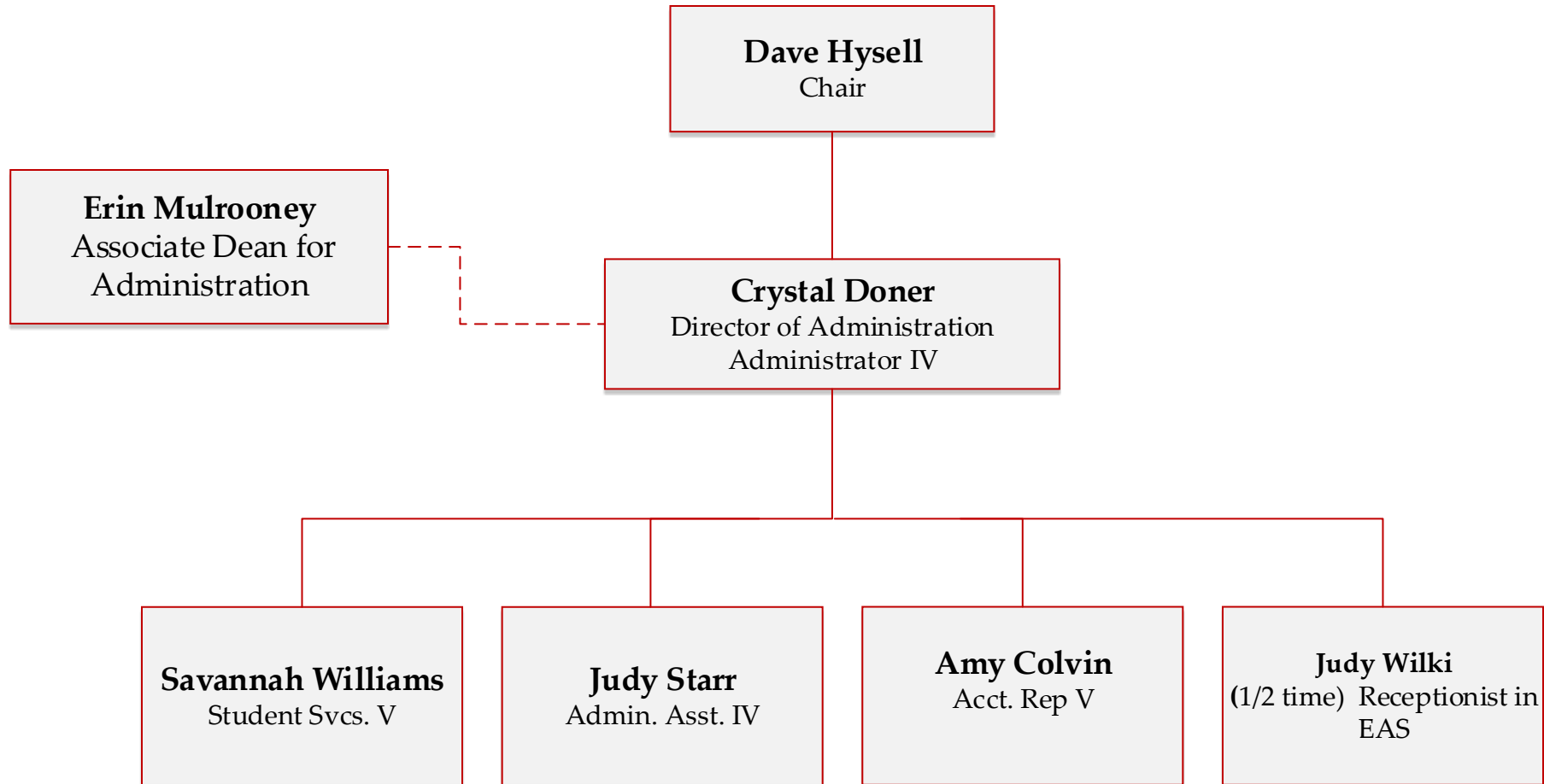
# Department of Biomedical Engineering

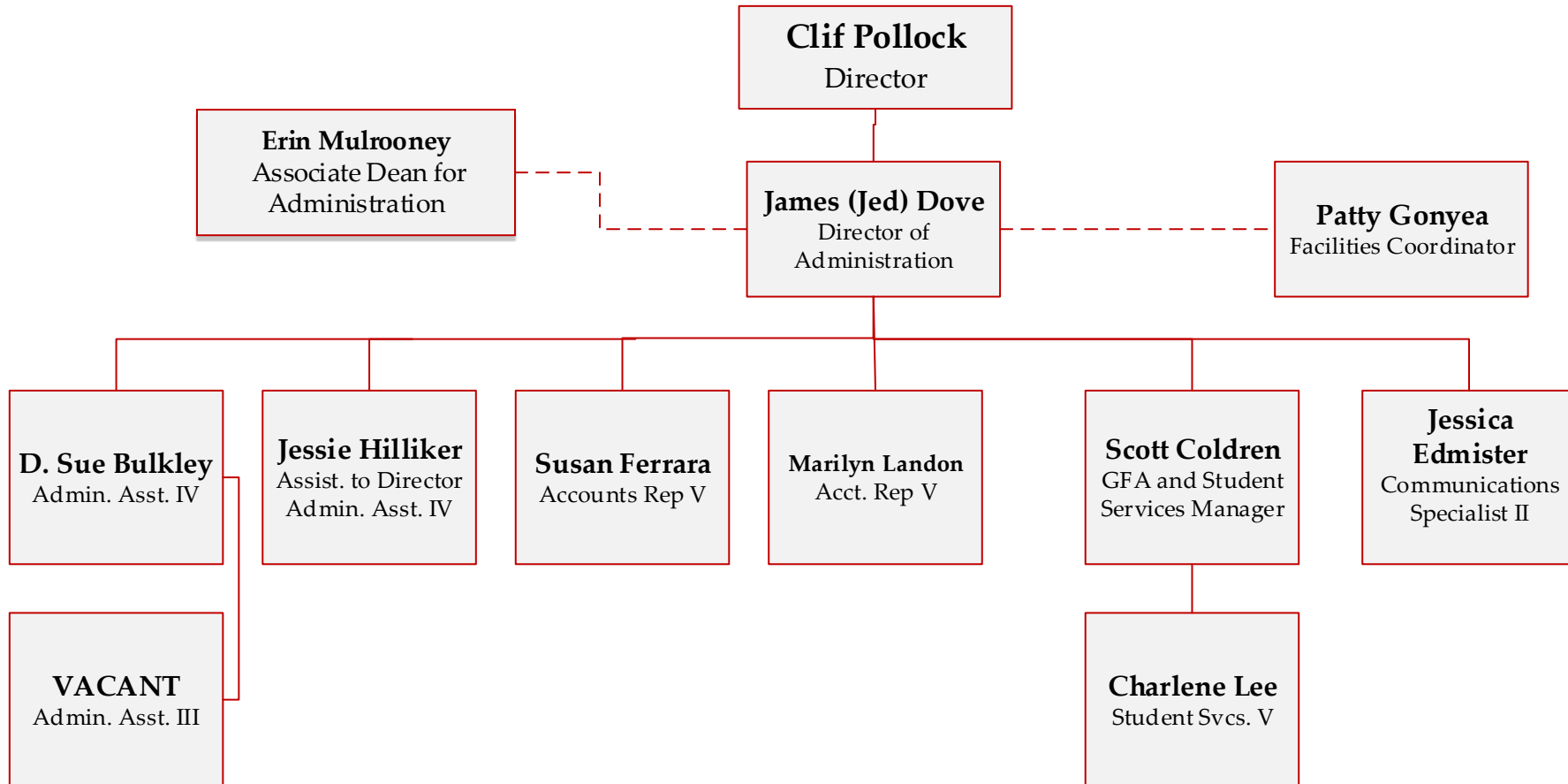




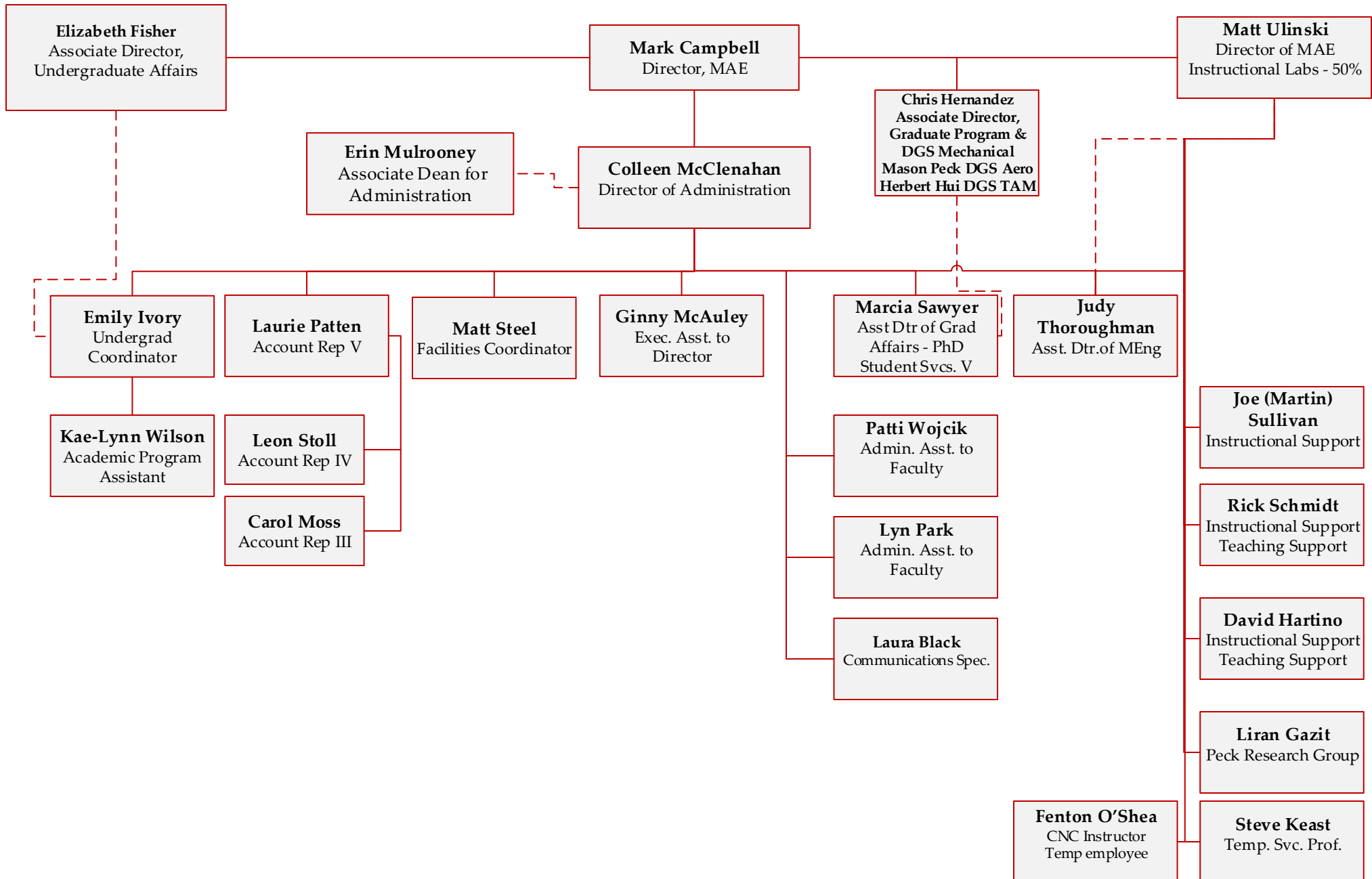
# School of Civil & Environmental Engineering







# Sibley School of Mechanical & Aerospace Engineering



# Department of Materials Science & Engineering

